



FOR YOUTH DEVELOPMENT®  
FOR HEALTHY LIVING  
FOR SOCIAL RESPONSIBILITY



# STUDENT YMCA CHAPTERS

**Student Y** is a student-led program for middle and high school students (grades 6-12) interested in making an impact in local and global communities. Student Y is a way for your school or community organization to engage in meaningful service learning projects throughout the school year, and develop into compassionate community leaders. Student Y promotes youth development, social responsibility, and healthy living through: Civic Engagement, Servant Leadership, and Character Development.

Student Y Chapters may affiliate year-round, however Student Y materials are distributed to chapters between an August-September or January-February period. Affiliation during these periods is highly encouraged to receive the maximum benefits of the program.

**Chapter Affiliation: [www.kyymca.org/affiliation](http://www.kyymca.org/affiliation)**

# STUDENT PROGRAM AREAS

Throughout the year, Student Y Chapter members learn, serve, and lead as a chapter and as individual members in the following areas of programming: Civic Engagement, Servant Leadership, and Character Development. Within each area, chapters and their student leadership can design and develop a yearlong plan that best serves the needs of their school and community while fulfilling the mission of the YMCA. Chapters may choose to serve in other ways, and are not limited to these programs.

## Civic Engagement | Year-Round

**Inspire U.S. & Kentucky Secretary of State:** During the year, Student Y Chapters are encouraged to register as many eligible voters in their schools and communities as possible. Chapters can plan voter registration drives and voter education events with the help of Inspire U.S. and the KY YMCA, which provides training and tools to efficiently and successfully register and educate voters.

**KYA:** During November and December, Student Y Chapters can choose to attend our Kentucky Youth Assembly conference. At KYA, chapters bring delegations of students to present and debate bills.

**KUNA:** During March, Student Y Chapters can choose to attend our Kentucky United Nations Assembly. At KUNA, chapters bring delegations of students to present and debate resolutions and emulate the inner-workings of the United Nations.

## Servant Leadership | Year-Round

**Y-Cards & Y-Points:** Student Y Chapters work to organize year-round service-learning into three levels - chapter, collaborative (multi-chapter), and individual - which collectively represent the overall service of each chapter. To aid students in planning these three levels of service, we send a deck of Student Y Cards to each affiliated chapter. Student Y Cards provide chapters with 52 engaging ways to have fun and plan service throughout the year.

**WaterStep:** During the spring, Student Y Chapters hold "Shoes for Water" drives in their local communities. Students bring their donated shoes to KUNA, where our partner WaterStep collects and then converts the donated shoes into funds to aid with water filtration systems in 13 world countries.

**WeSchools & WeDay KY (April 16, 2019):** The KY YMCA partners with WeDay Kentucky to provide Student Y Chapters with access to the WeSchools national toolkit as well as a ticket to Kentucky WeDay —held each April to celebrate schools that have completed one local and one global service project.

## Character Development | Year-Round

**Ted-Ed:** The KY YMCA is an official TED-Ed Club, and partners with Ted-Ed to support students in discovering, developing, and sharing their ideas in the form of TED-style talks. Once affiliated, Student Y Chapters can register for access to the TED-Ed curriculum and work over each fall to create original talks, which are then uploaded and shared via TED-Ed's national platform.

**GFI:** Over MLK weekend, Student Y Chapters can choose to send members to Go For It (GFI), our winter Character and Leadership Development conference. GFI builds servant leaders through a focus on personal discovery and skills development.

**LTC:** In June, Student Y Chapters can choose to send members to our Leadership Training Conference (LTC). LTC builds servant leaders through a focus on personal discovery and skills development.

# Why choose Student Y?

## A UNIQUE PROGRAM THAT PROVIDES CHAPTERS:

1. Access to the Student Y Toolkit, a step-by-step monthly resource guide to support chapters with starting or re-launching a chapter, as well as action planning and setting service goals for the year. The toolkit includes training videos, chapter planning how-tos and templates.
2. Streamlined curriculum access to a National network of youth development and service-minded partners, including WeDay KY and WeSchools, Waterstep, Inspire U.S., TED-Ed, and more.
3. Technical assistance and support from Y-Staff members, who can assist with recruitment, voter registration, MobileServe support, training videos and webinars, and more.
4. Member discounts to KY YMCA Youth & Government conferences, as well as to our Character Development conferences.
5. A chance to engage with a network of over 150 Student Y Chapters across Kentucky, through conferences, monthly Student Y bulletins, and collaborative service.

## STUDENT'S WHO PARTICIPATE IN STUDENT Y:

- Define and put into practice meaningful servant leadership
- Understand the legislative process on a local and global scale
- Develop strong public speaking, professional writing, and digital media skills
- Build empathy for a diversity of experiences and cultures
- Build positive culture and a spirit of collaboration within their schools

---

## CHAPTER AFFILIATION PROCESS

To become an official Student Y Chapter, Advisors must complete the membership process for their students, which can be found on our Online Community. To affiliate your school, please complete the following steps:

**1. Add Students to Online Community Roster:** Once Advisors receive login information for the online community, you will enter in the names and personal email addresses for your students. Each student will then receive an email with a link to the **Delegate Info Form**, which they must submit to finish the process.

### **2. Identify Student YMCA Members & Chapter Officers**

Follow the process on the online community for identifying your students as Student Y Members and indicating which students will be serving as your Chapter Officers

### **3. Submit Membership Fee Payment**

Mail your Student Y Affiliation Fee (**\$10 per student member**) to the Kentucky YMCA at the address listed below. School Checks or Purchase Orders are preferred payment methods

# STUDENT Y FAQs

**Who can be a member?** Student Y is for all students who wish to become cause-driven servant leaders in their schools and communities and who uphold the Y's core values of caring, honesty, respect, and responsibility.

**Who leads each Chapter?** Student Y Officers will be appointed or elected at each school or organization to help lead individual chapters. The recommended officer positions are President, Vice President, Secretary, Service Chair, and Civic Engagement Chair, although chapters are welcome to have others.

**Who Advises each Chapter?** Chapters must have an enthusiastic and caring adult advisor, usually a teacher, administrator, or approved parent volunteer to support chapter activity.

**What do you get when you Affiliate?** As an affiliated chapter you will receive access to the digital Student Y Toolkit that includes an annual timeline, chapter development modules, action planning templates, and other resources to support you throughout the year. You will also gain access to Student Y webinars, be subscribed to the Student Y monthly bulletin, receive discounts to LTC, GFI, KYA, and KUNA conferences, gain access to national partnerships with TED-Ed, WeDay, Inspire U.S., Waterstep, as well as qualify for service awards such as the Georgia Davis Powers Award and more.

**How much does it cost?** The Annual Affiliation Fee is \$10 per Student Y Member.

**When do I need to affiliate?** Chapters may affiliate year-round, however, in order to receive Student Y materials, schools are encouraged to affiliate during the Summer/Fall affiliation period or the Winter/Spring affiliation period. In order to receive Student Y materials this fall, please affiliate between August 1<sup>st</sup>, 2018- September 30<sup>th</sup>, 2018. Individual students can join existing Student Y's throughout the year. The Winter/Spring Affiliation period will be open January 2, 2019- February 22<sup>nd</sup>, 2019.

## STUDENT Y QUESTIONS?

Contact: Rianna Ayala, KY YMCA Program Coordinator

[rianna@kymca.org](mailto:rianna@kymca.org)

or speak with your KY YMCA Regional Director



## MOBILESERVE

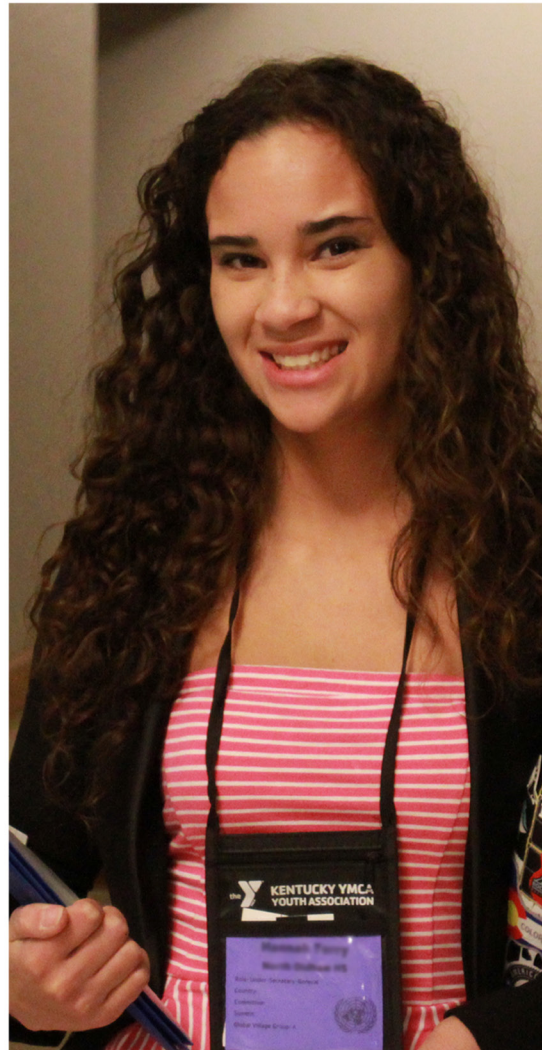
To receive service points towards your overall chapter rankings, chapters and members must report service on MobileServe, our service reporting app which you can find in your app store and online: [app.mobileserve.org](http://app.mobileserve.org). All chapters and members receive MobileServe accounts after affiliating.

KENTUCKY YMCA YOUTH ASSOCIATION

91 C. MICHAEL DAVENPORT BLVD, FRANKFORT, KY 40601

P 502.227.7028 • F 502.227.7030





# STUDENT YMCA

LEARN MORE AND GET INVOLVED AT  
[kymca.org](http://kymca.org)